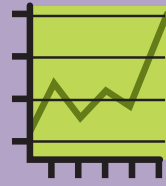


WHY IS BEHAVIORAL HEALTH AN IMPORTANT ISSUE?



HUMAN COST

MENTAL ILLNESS IS THE LEADING CAUSE OF DISABILITY



ECONOMIC IMPACT

4,489 UNHOUSED PEOPLE
(2022) PHILADELPHIA

157 SUICIDES
(2021)

1,276 FATAL DRUG OVERDOSES
(2021)

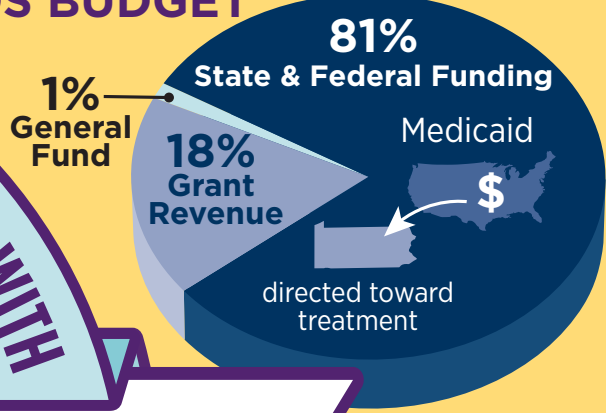
PHILADELPHIA

\$4 billion
IN ECONOMIC IMPACT

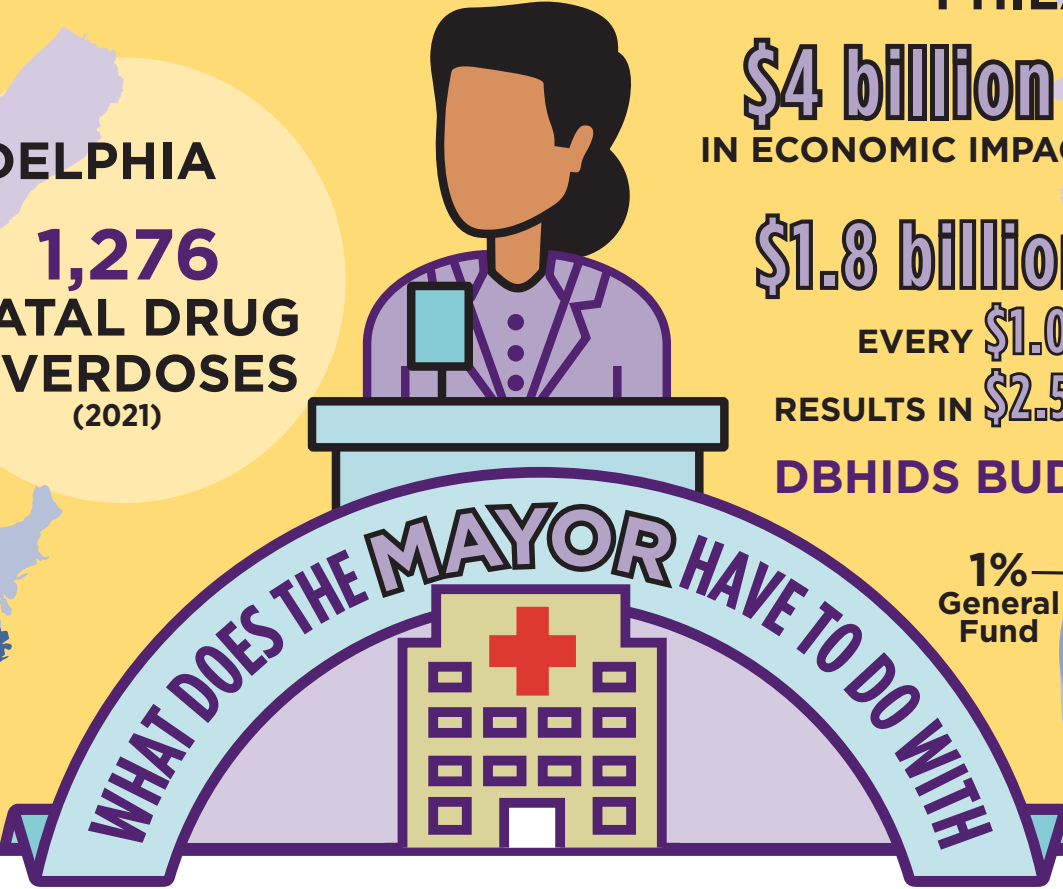
250,000+
JOBS CREATED

\$1.8 billion ANNUAL BUDGET
EVERY **\$1.00** SPENT BY DBHIDS
RESULTS IN **\$2.50** IN ECONOMIC ACTIVITY

DBHIDS BUDGET



NATIONALLY **46%** diagnosed with a mental health condition sometime in their life.



BEHAVIORAL HEALTH



MAYOR SETS THE VISION FOR RESIDENT & COMMUNITY WELLNESS AND LEADS CITY DEPARTMENTS TO MAKE THE VISION A REALITY.



CITY DEPARTMENTS IMPACTING BEHAVIORAL HEALTH

DBHIDS
DEPARTMENT OF BEHAVIORAL HEALTH AND INTELLECTUAL DISABILITY SERVICES

PROVIDES

- BEHAVIORAL HEALTH CARE
- INTELLECTUAL DISABILITY SUPPORT
- FAMILY SERVICES
- EARLY INTERVENTION

OVERSEES

CBH COMMUNITY BEHAVIORAL HEALTH

COVERS

- MENTAL HEALTH
- DRUG & ALCOHOL SERVICES

FOR **45%** MEDICAL ASSISTANCE RECIPIENTS

MANAGES

The network of **SERVICE PROVIDERS** who are Medicaid Licensed and Enrolled

DPH
DEPARTMENT OF PUBLIC HEALTH

OPERATES CITY HEALTH CENTERS which provide primary care services, including **behavioral health consultants**

POLICE DEPARTMENT

RESPONDS TO EMERGENCY CALLS. Officers train in **Crisis Intervention** to improve violence prevention, de-escalation and community collaboration

RESPONSIBLE FOR PUBLIC SAFETY which impacts mental health

SCHOOL DISTRICT OF PHILADELPHIA

PARTNERS WITH CBH to provide **Intensive Behavioral Health Services (IBHS)** so students can access behavioral health treatment in schools

OFFICE OF HOMELESS SERVICES

Many in the unhoused population experience serious mental illness and substance use disorders

DEPARTMENT OF HUMAN SERVICES

OPERATES THE CITY'S **CHILD WELFARE SYSTEM** and oversees juvenile detention (many experience significant trauma, which impacts behavioral health)

WHO CAN BENEFIT? **ALL Philadelphia Residents**

PARTICULARLY THE **700,000** CITY RESIDENTS WHO ARE ELIGIBLE FOR MEDICAL ASSISTANCE

AND THE **100,000** INDIVIDUALS WHO RECEIVE SERVICES WITH CBH-COVERED PROVIDERS

This resource was created by the Committee of Seventy, a nonpartisan advocate for better government, and made possible by the generous support of The Scattergood Foundation. Design by 12 Squared. Learn more about Philadelphia's behavioral health system at www.scattergoodfoundation.org.