



philadelphia
voter guide

philadelphia voter guide

Why Voting Matters	pg. 3
Make A Plan Election Worksheet	pg. 4 - 5
Check Your Registration	pg. 7
Vote Your Way - In Person / Polling Location	pg. 8
Vote Your Way - In Person / Language Access	pg. 9
Vote Your Way - By Mail	pg. 10 - 12
Provisional Ballots	pg. 13
Voter Rights and Responsibilities	pg. 14 - 15
Where To Get More Information	pg. 16
Build Your Ballot Tool	pg. 17



why voting matters

Voting, at its core, is an opportunity to be heard.

As a citizen of the United States, voting is one of your fundamental rights, a right many Americans fought to attain, and one we should not take for granted. By voting, you can *shape your community and the country by choosing to elect candidates who best represent your views and values.*

We are at a crucial point in time, not only for our city but for our nation. *Now is your chance to speak up* for yourself, your loved ones, and your community.

Your vote is your voice, and every vote matters.

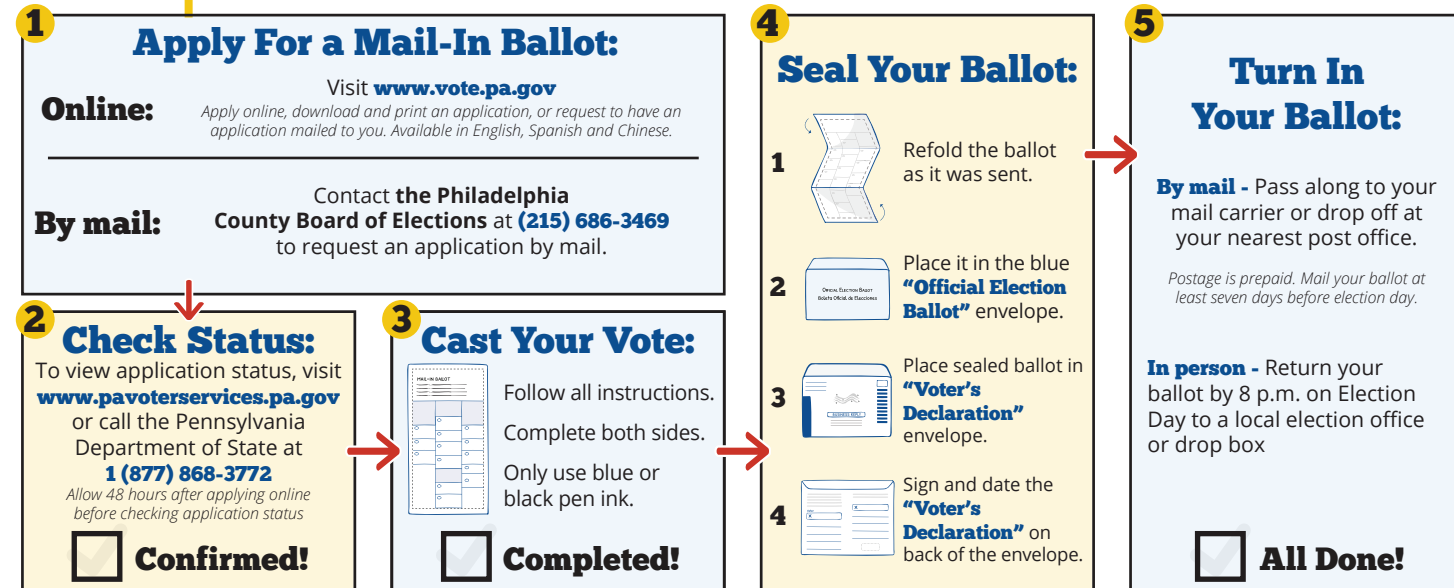
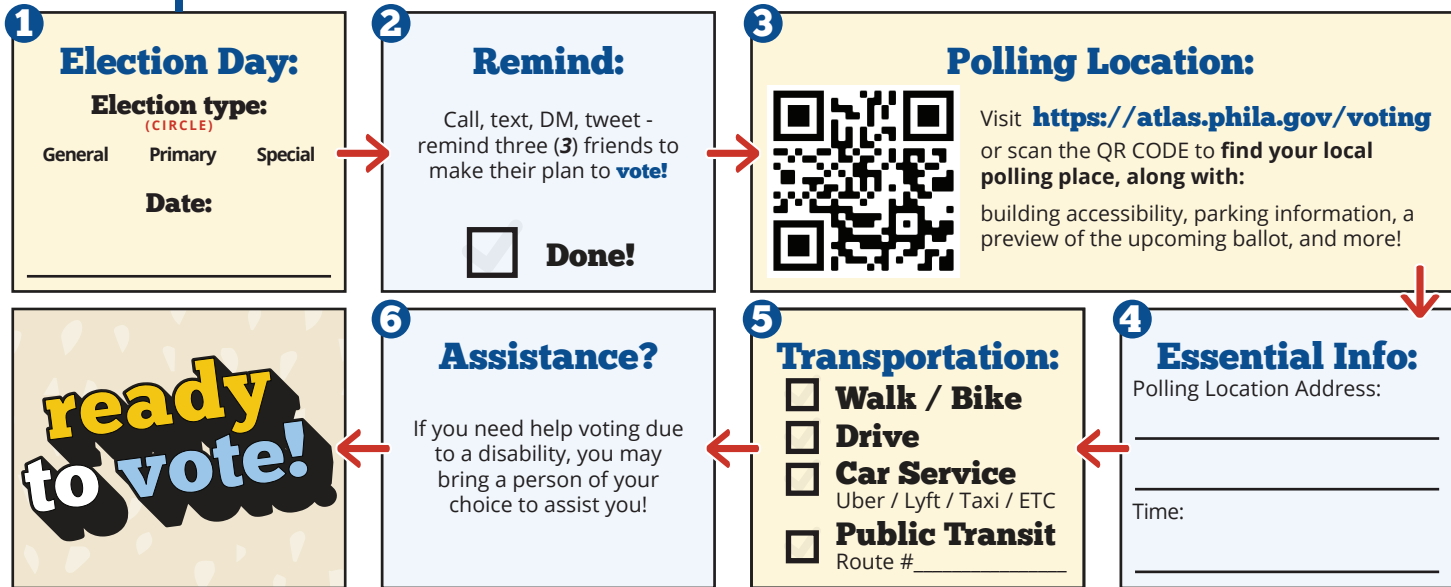
Make a plan. Stand up and be counted. VOTE!

make a plan

Vote Your Way: in person, or by mail?

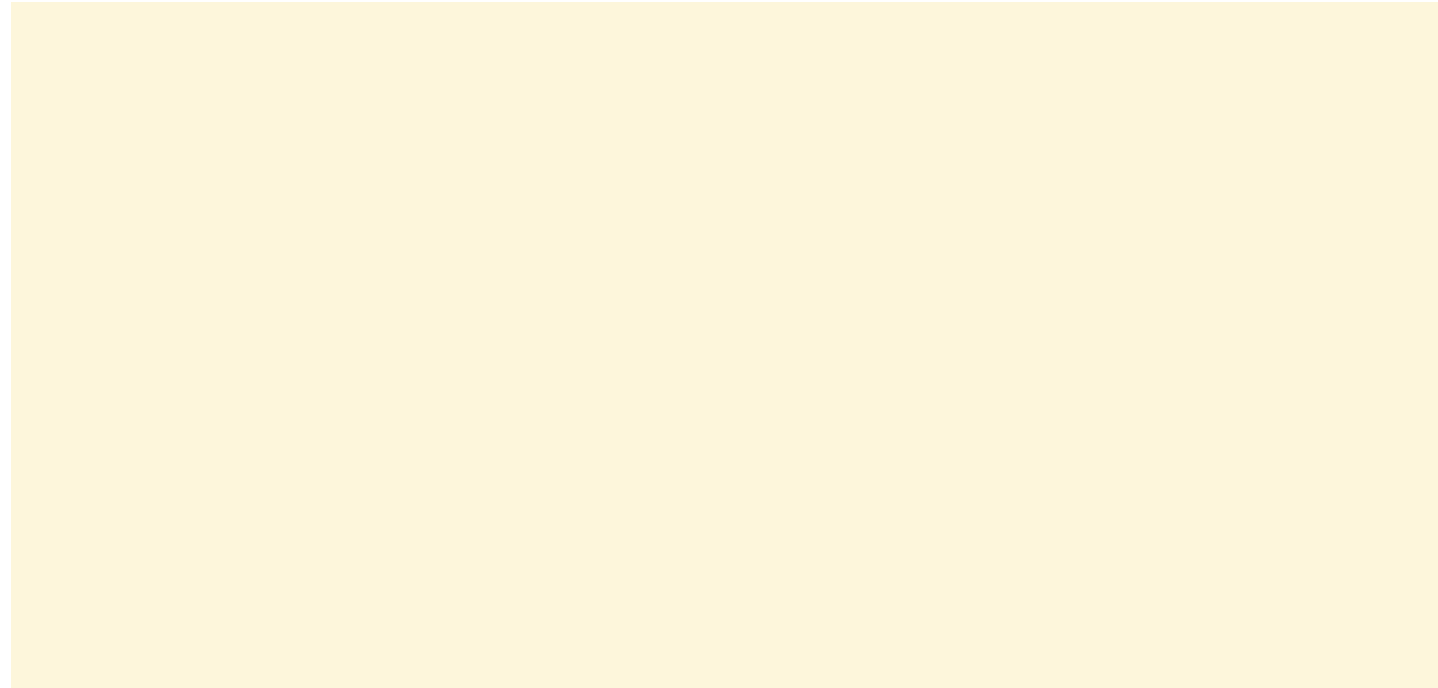
BY MAIL →

IN PERSON



Once you submit your mail-in ballot, you can check its status by going to www.pavoterservices.pa.gov
 You can also call the Pennsylvania Department of State at **1 (877) 868-3772**.

notes:



check your registration

You must be registered to vote!

Deadline:

October 23, 2023
(10/23/23)

is the last day to register
for the 2023 Municipal
General Election.

Check your registration:



You can visit

www.pavoterservices.pa.gov

or scan the QR code to confirm
your voter registration status.

vote your way - in person

Polling Place Access:

For seniors and people with disabilities, the right to vote requires **proper access to voting services**.

The City of Philadelphia is required to ensure that its election process is accessible to people with disabilities. **This means that accessible polling places are available within each election district.** Voting systems also have audio, tactile keys, and other features for assistance.

If a fully accessible location that meets all federal and state criteria **is not available** for a polling place in your election district, you have the option of **voting by mail**.

Visit <https://vote.phila.gov> for a full list of polling locations and accessibility information.

Language Access:

It is the policy of the Office of the City Commissioners to **ensure that multi-lingual communities and individuals can gain equal access to voting services.** **Language Identification Guides** are posted in all public facing locations.



Election Day:

Interpretation services are provided at **every polling place** in the City.

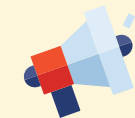
If requiring language assistance, the voter will be asked to point to a language in the **Language Identification Guide** and an interpreter will be contacted either in-person or over the phone.



Voter Assistance:

Voters who cannot read or write in English are allowed assistance to vote by a person of the voter's choice*
other than the Judge of Election, the voter's employer or agent of the employer, or officer or agent of the voter's union.

When bilingual staff is not available, a staff member will contact an interpreter telephonically.



Report:

If you believe you've been wrongly denied services, **you may file a formal Language Access grievance** with

the Philadelphia Commission on Human Relations:

(215) 686-4670

vote your way - by mail

In Philadelphia, every registered voter is allowed to vote by mail-in ballot.

Applying for a mail-in ballot:

Apply Online:

To apply online, go to www.vote.pa.gov or scan the QR code below.

The online application is available in English, Spanish, and Chinese.



Apply By Mail:

There are two ways to get a paper application. You can:

- Go to www.vote.pa.gov to download and print an application. On this site, you can also request to have an application mailed to you.

- Contact the Philadelphia County Board of Elections at **(215) 686-3469** to request to have a form mailed to you.

Paper applications are available in English, Spanish, Chinese, and Vietnamese.

Application Status:

Once you submit your mail-in ballot application, you can check its status by going to www.pavoterservices.pa.gov

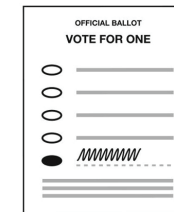
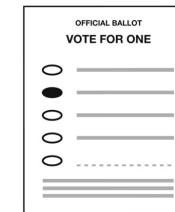
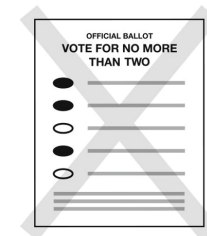
You can also call the Pennsylvania Department of State at

1 (877) 868-3772

If you apply online, you'll be able to view the status of your application within 48 hours after submitting it.

Filling out your mail-in ballot:

- Use **blue** or **black** ink.
- Fill out **both sides** of the ballot.
- Be careful when marking your ballot; **no cross-outs or erasures** - that will invalidate your ballot.



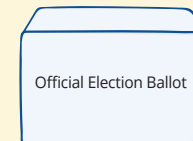
Submit your mail-in ballot:

1



Refold ballot the same way as it was sent.

2



Place it in the blue **“Official Election Ballot”** envelope.

3



Place sealed ballot in **“Voter’s Declaration”** envelope.

4



Sign and date the **“Voter’s Declaration”** on back of the envelope.

provisional ballots

A Provisional Ballot is a paper ballot used to protect the **integrity of the election** and the **rights of voters**.

All valid votes cast via provisional ballot have the same impact as votes cast on the voting machines.

Provisional ballot use often occurs when:

- A person **cannot be located** in the poll books that contain a list of registered voters.
- If the voter applied for, but **did not return**, a Mail-In or Absentee Ballot

Poll workers are required to offer a provisional ballot on request.

To check the status of your provisional ballot, visit www.pavoterservices.pa.gov

Depending on the volume of provisional ballots cast, the status of your provisional ballot may not be available immediately.

Turning in your ballot:

By Mail

You can turn in your ballot by mail.

The postage is prepaid.

The United States Postal Service recommends that you mail your ballot at least

seven (7) days prior to election day

to ensure it arrives on time.

In Person

You can bring ballot to one of the following locations:

- The Philadelphia County Board of Elections
- A satellite election office
- A mobile ballot return pop-up
- A ballot drop box

Exact drop-off locations may change each election. Visit

<https://phila.gov/voting/>

to view an interactive map featuring election offices, official mobile mail-in ballot return pop-ups and mail-in ballot drop box locations. Ballots must be returned by 8PM on Election Day.



Once you submit your mail-in ballot, you can check its status by scanning the QR code, visiting **www.pavoterservices.pa.gov** or calling the Pennsylvania Department of State at **1 (877) 868-3772**



voter rights and responsibilities

Voting is an essential right.

Every eligible voter is entitled to rights under the law, along with access to resources and contact information needed to report issues or problems encountered in the voting process.

As a voter in Pennsylvania, you have the **right** to:

Vote

If you are a U.S. citizen over the age of 18 who has registered to vote in your county, it is your legal right to vote in Pennsylvania.

Privacy

You have the right to vote privately and free from coercion, intimidation, or harassment when voting by mail or at a polling place.

Accessibility

Seniors, people with disabilities, and those facing language barriers can request help from anyone they choose in order to vote.

Information

To ensure every eligible voter can cast a ballot properly and privately, you have the right to ask election officials about voting procedures.

Provisional Ballots

Provisional ballots are a fail-safe option to ensure no voter is disenfranchised. Any voter has the right to request a provisional ballot.

Report

If you encounter any issues or problems while voting, call the Philadelphia City Commissioners Office at **(215) 686-1590**.

Voting is your responsibility.

Voting is a right, but it is also a responsibility. Here is a list of responsibilities every registered voter needs to understand what and who they're voting for, and if their vote counts.

As a voter in Pennsylvania, you have the **responsibility** to:

Register

Before you can vote, you have to register. Get informed about how and when to register, registering after a move, online registration, deadlines and much more.

Review

Make sure there are no surprises when casting your vote. Review voting procedures and get clarification from local officials before Election Day.

Research

Know what you're voting for before heading to the polls. Learn about every office, measure and candidate by creating your own ballot at <https://seventy.org/>

Verify

Verify your selections on your mail-in ballot, paper ballot, or at your polling place. If you make a mistake, advise your local election official immediately.

Ask Questions

For questions about the voting process, contact the Philadelphia City Commissioner's Office online: <https://vote.phila.gov/>

Report

If you see any voter intimidation, interference or unlawful electioneering, immediately contact the District Attorney's Election Task Force at **(215) 686-9641**.

where to get **more** information

You can find information about elections and voting in Philadelphia at <https://vote.phila.gov>. If you registered to vote in another Pennsylvania county, you can find your local election office at www.vote.pa.gov

Local election offices:

Philadelphia County Board of Elections

If you have questions about the election or voting procedures, contact the Philadelphia County Board of Elections at:

(215) 686-3469

Interpretation services are available.

Philadelphia Voter Registration Office

If you have questions about registering to vote or confirming your voter registration, contact the Philadelphia Voter Registration Office at:

(215) 686-1591

Interpretation services are available.

Philadelphia City Commissioners

For polling location details, candidate information and more, you can contact the Office of the Philadelphia City Commissioners.

Visit

<https://vote.phila.gov>

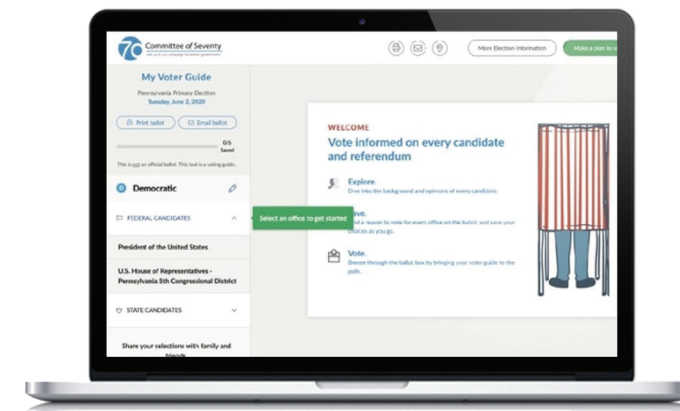
build a sample ballot

Visit <https://ballot.seventy.org> for a **Build Your Own Ballot** tool to help you **navigate** the upcoming election.

Voters will have the chance to review nonpartisan information on every office, candidate and ballot question.

At the end, you can download and print your sample ballot to take with you to the polls!

Visit <https://ballot.seventy.org> to build your ballot today!





<https://phila.gov/phillycounts>



Philadelphia
City Commissioners

<https://vote.phila.gov>



Office of
Immigrant Affairs
CITY OF PHILADELPHIA

<https://phila.gov/OIA>



Committee of Seventy

<https://seventy.org>