

NOMINATING PANEL

13 Civic and Community Leaders submit names for School Board to the **MAYOR**

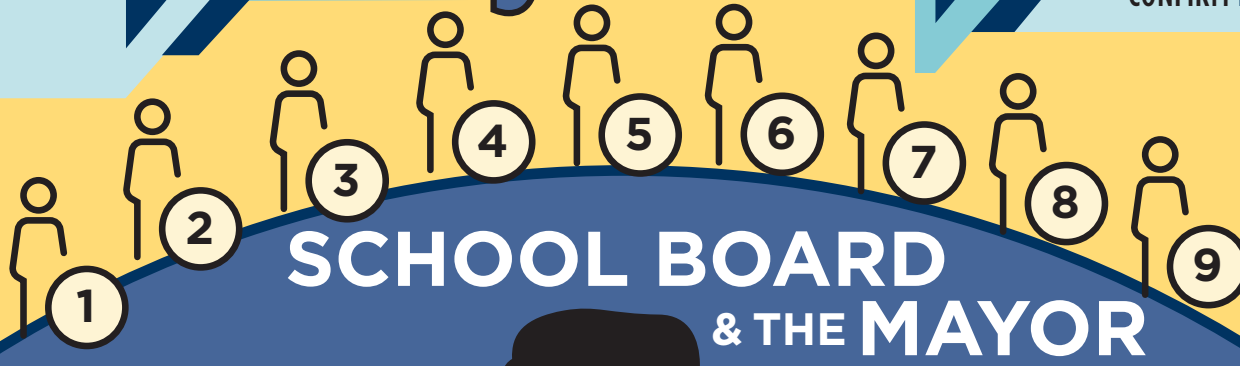
MAYOR

Appoints a **9** member School Board

CITY COUNCIL

ELECTED MEMBERS

CONFIRM **MAYOR'S** APPOINTEES



SCHOOL BOARD & THE MAYOR

SCHOOL BOARD RESPONSIBILITIES

MAYOR RESPONSIBILITIES

OVERSEES SCHOOL SYSTEM



POLICY

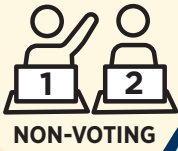


BUDGET

DECIDES SCHOOL STATUS



2 STUDENT REPRESENTATIVES



NON-VOTING



Manages school system daily operations

SUPERINTENDENT

APPOINTED BY SCHOOL BOARD

OVERSEES CITY DEPARTMENTS



CITY



INTERACT



SCHOOLS

AFTERSCHOOL, SUMMER EMPLOYMENT AND TRUANCY PROGRAMS, MENTAL HEALTH SERVICES, PARKS AND RECREATION

Leads initiatives on behalf of the **MAYOR**



CHIEF EDUCATION OFFICER

EXPANDING PRE-K SEATS, COMMUNITY SCHOOLS

WHAT DOES THE MAYOR HAVE TO DO WITH

CITY SCHOOLS

8TH LARGEST

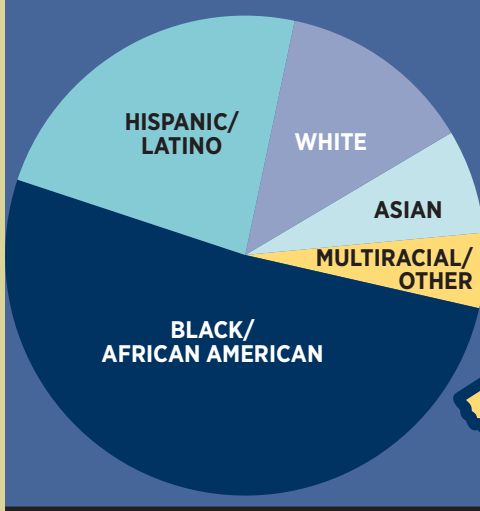
SCHOOL DISTRICT IN THE COUNTRY

200,000 STUDENTS ACROSS

330 SCHOOLS

(DISTRICT-RUN AND CHARTER SCHOOLS)

STUDENT DIVERSITY



173 LANGUAGES SPOKEN

20,000 SCHOOL DISTRICT EMPLOYEES



DISTRICT SCHOOLS typically draw from neighborhoods

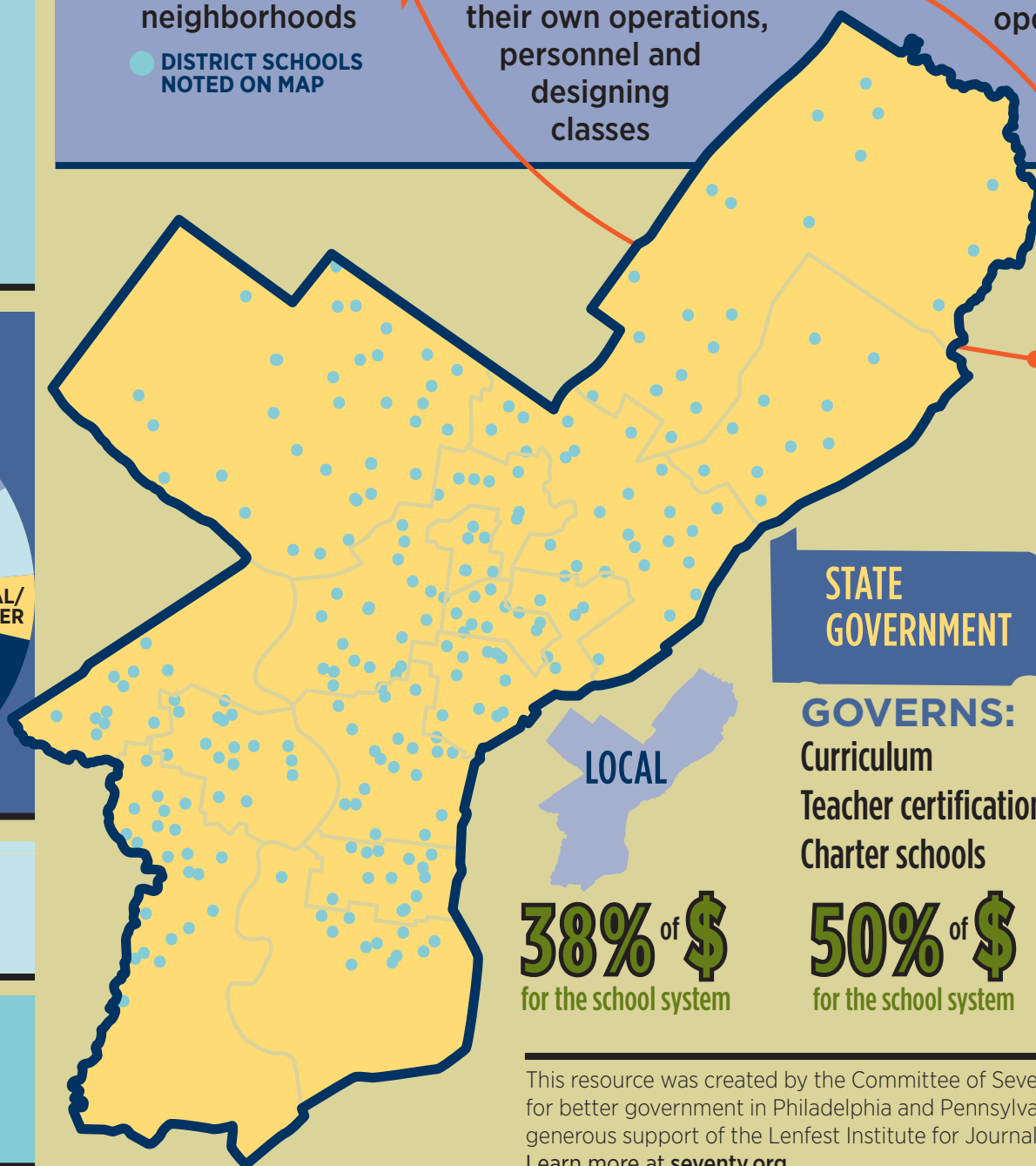
● DISTRICT SCHOOLS NOTED ON MAP



CHARTER SCHOOLS latitude in managing their own operations, personnel and designing classes



PRIVATE & PAROCHIAL SCHOOLS operate independent of the school district



2023 EXPENSES

\$2.2B

DISTRICT SCHOOLS

\$1B

CHARTER SCHOOLS

DEBT & ADMINISTRATION

STATE GOVERNMENT

GOVERNS:
Curriculum
Teacher certification
Charter schools

38% of \$
for the school system

FEDERAL GOVERNMENT

GOVERNS:
Standardized testing
Special education requirements

12% of \$
for the school system

This resource was created by the Committee of Seventy, a nonpartisan advocate for better government in Philadelphia and Pennsylvania, and made possible by the generous support of the Lenfest Institute for Journalism. Design by 12 Squared. Learn more at [seventy.org](https://www.seventy.org).